

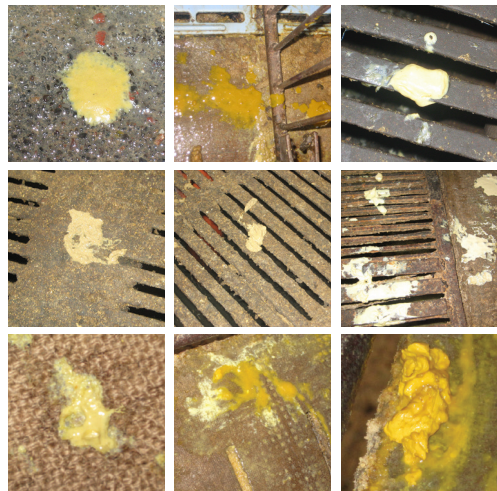
GUIDE TO DIARRRHEA IN PIGS

HOW TO MONITOR AND FIND SOLUTIONS

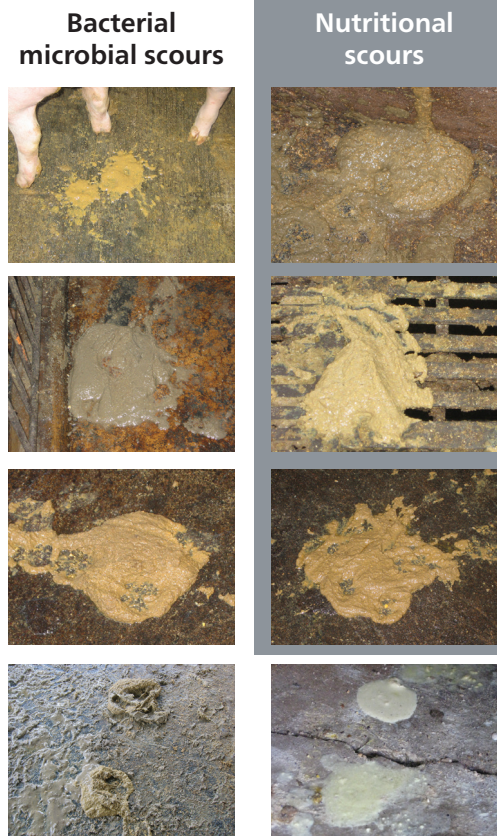


Different types of diarrhea

Pre-wean microbial scours



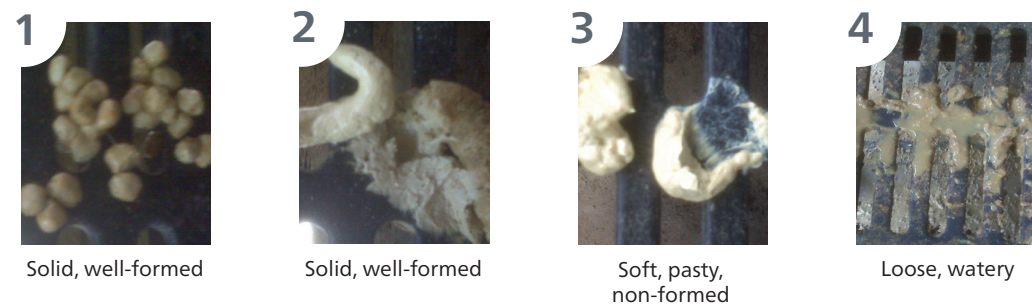
Post-wean scours



Diarrhea scoring guide

	Normal	Moderate	Severe
Fecal score	<2	2-2.5	>2.5
% diarrhea	<10%	10-20%	>20%
Duration of diarrhea	<3 days	3-5 days	>5 days
Actions	<ul style="list-style-type: none"> Support therapy - Acidifiers, electrolytes Monitor affected animals 	<ul style="list-style-type: none"> Isolate individuals Monitor daily Gruel feed Medicate with injectables Seek veterinarian advice for individual medication Support therapy 	<ul style="list-style-type: none"> Check environmental factors Check feeds and feeding Check disease status Medicate, if needed Seek veterinarian advice for individual medication Support therapy

Fecal score



How to monitor and score

Fecal score

- Fecal score is rated in early morning by looking at the fecal consistency in each pen.
- The fecal scoring guide (1 to 4) is used to gauge the general consistency.
- Typically, assessments by 2-3 people can be averaged to represent the pen fecal score.
- Should be done daily until the fecal score normalizes.

% diarrhea

$$= \frac{\text{Total number of pigs with fecal score "4"} \times 100}{\text{Total pigs in the pen}}$$

Duration of diarrhea

Total days from weaning where pigs exhibit fecal score "4"

Environmental and management causes

- Poor hygiene and sanitation
- Too cold and drafty
- Wet pens
- Poor biosecurity
- AIAO failure
- High temperature variation during 24-hour period
- Mixing animals of different ages and/or different sources
- Low colostrum intake
- High percentage of first parity sows in the herd
- Low birth and weaning weights



Nutritional causes

- High crude protein in the diet
- High fats and oils
- Feed anti-nutritional factors
- Mycotoxins
- Inappropriate feed ingredients
- Delayed feed/late eaters
- High acid-binding capacity in the diet
- High coliforms in drinking water

FECAL CONSISTENCY



Before weaning After weaning

Note: The same creep feed is fed before and after weaning.

Contact pig@alltech.com to learn more about how Alltech's range of nutritional solutions can help your herd.



Alltech.com

f AlltechNaturally

@Alltech

©2020. Alltech, Inc. All Rights Reserved. US_PL_GutH_po1